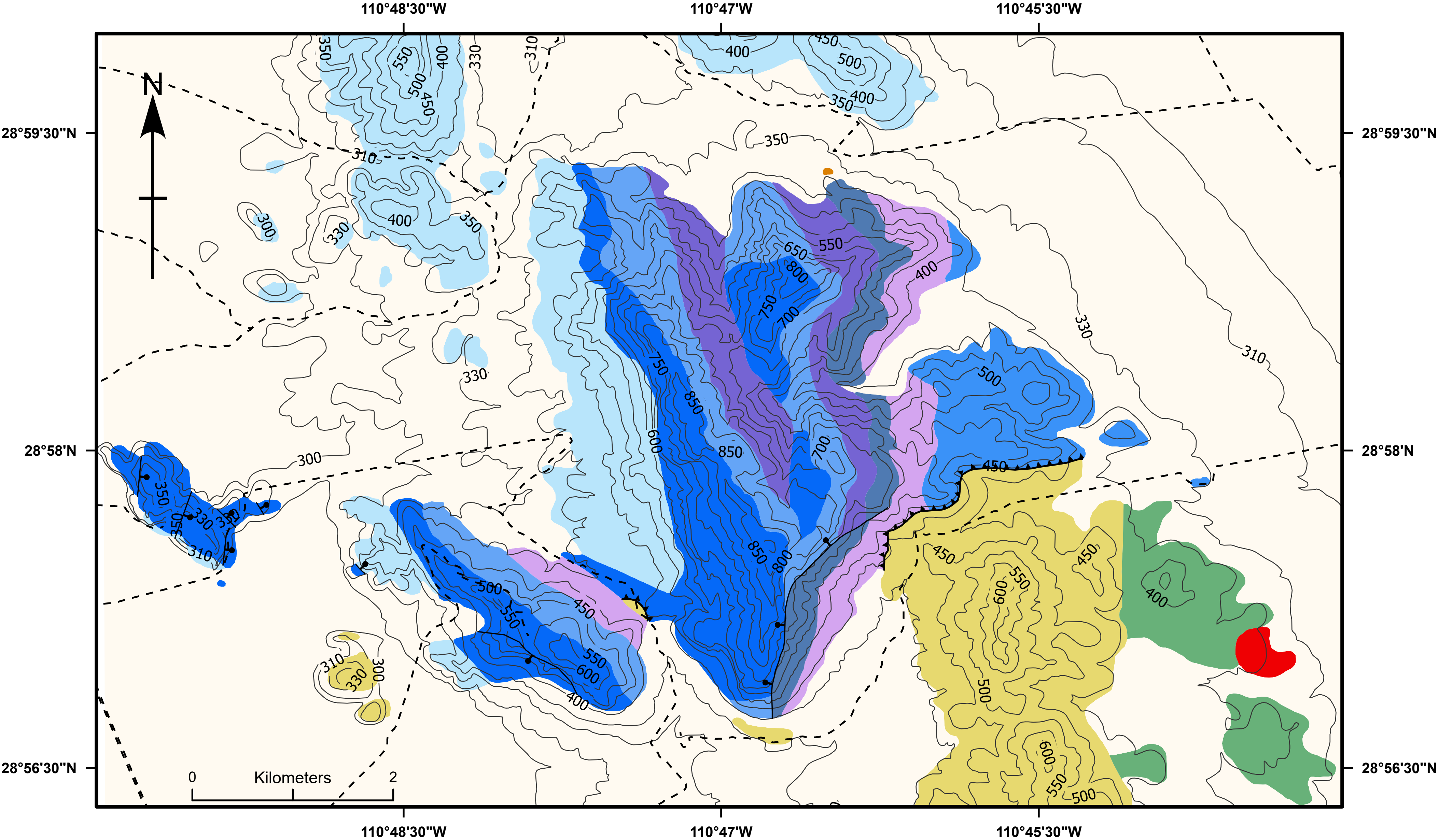


Geologic map of Sierra Santa Teresa area (Sonora). Based on Stewart et al. (1997)



Legend

- | | | |
|--|--------|------------------|
| Non-differentiated Quaternary rocks | Unit 7 | Unit 2 |
| Gravel deposits (Tertiary) | Unit 6 | Unit 1 |
| Rhyolite (Tertiary) | Unit 5 | High-angle fault |
| Lower Jurassic and Upper Triassic strata | Unit 4 | Thrust fault |
| Andesite (Mesozoic) | Unit 3 | Dirt road |